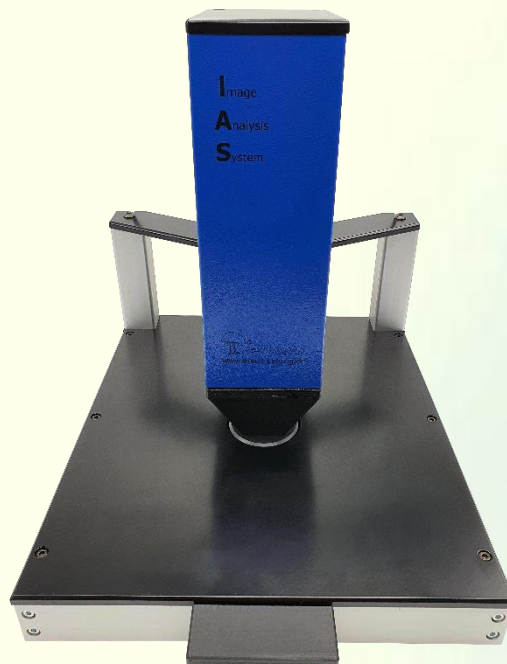


emco IAS Embossing Tester

**Device for Detecting and Controlling the
Embossment in Paper**



The visual appearance and functionality of papers are modified by embossed patterns. The strength of the embossing plays a big role for the quality and processing of a paper.

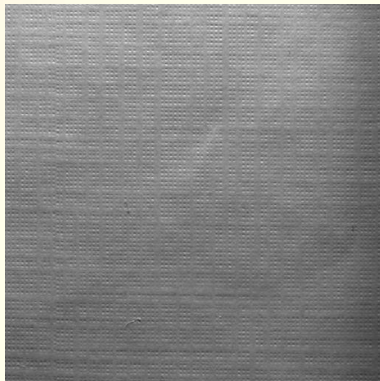
The embossing index is determined with the Embossing tester according to original algorithms of Dr. Hermann Praast, Darmstadt.

Design and functionality

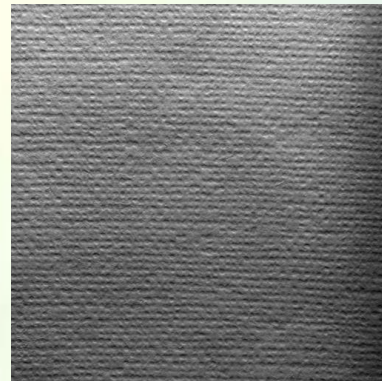
A reflected light system illuminates the paper sample in such a way that lighter or darker areas are captured by a camera. The high-contrast image is digitized and then evaluated. The devices are calibrated and provide reproducible results. The devices can be checked independently at any time by means of a standard.

Application

Quality control in the paper manufacturing and converting industry.



Weak embossing



Strong embossing

Technical data

Measuring field: 24 mm x 24 mm

Scope of supply

Device with camera and illumination unit, power supply unit with mains plug, calibration standard and certificate
Pan drive with software and drivers, software protection USB dongle,
PC ware on request

System requirements

CPU	Intel® Core™ i5-2520M, CPU @ 2.50 GHz, Cores: 4
RAM	4 GB
Operating system (OS)	Microsoft® Windows® 10 32/64 bit (required for USB 3.0)

Dimension

Net:	480 x 360 x 440 mm ³ / 11 kg
Gross:	800 x 600 x 700 mm ³ / 20 kg