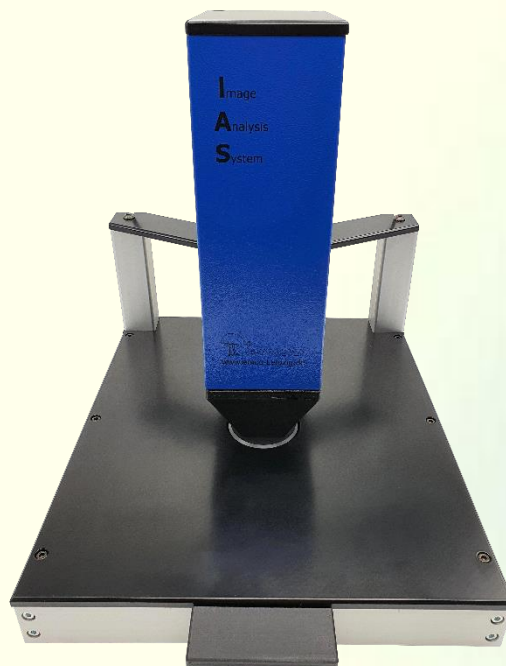


## **emco IAS Mottling Tester**

**Equipment for measuring the  
optical unevenness of printed papers**



Print uniformity is an essential criterion for assessing the quality of printed products, especially for solid or halftone prints with high coverage. This print unevenness, which appears as spotted images, is called mottling.

The quality of this print is clearly characterised by three parameters:

- Mottling index
- Homogeneity
- Colour spacing

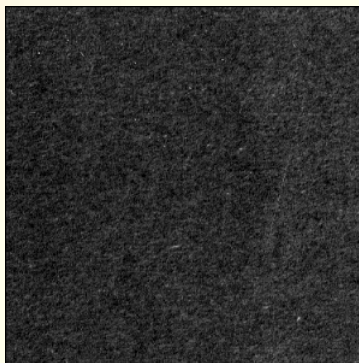
An objective assessment and quantification can be achieved with the IAS module "Mottling" according to the original algorithm of Dr. Hermann Praast, Darmstadt.

## Design and functionality

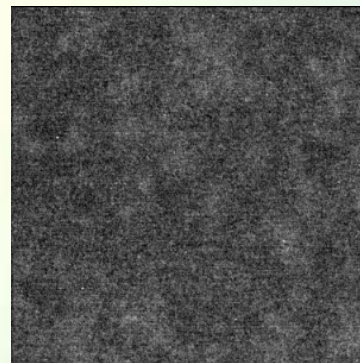
In a reflected light system, a paper sample is illuminated so that lighter and darker areas are captured by a CCD camera. The high-contrast image is digitised and then evaluated. The devices are calibrated and give reproducible results. The device check can be carried out at any time independently using the standard.

## Application

Quality control in papermaking and paper converting industry



Solid-tone area in offset printing  
high uniformity  
15 mm x 15 mm



Solid-tone area in offset printing  
poor uniformity  
15 mm x 15 mm

## Technical data

Measuring field: 30 mm x 30 mm  
Illumination: reflected light

### Scope of supply

Device with camera and illumination unit, power supply unit with mains plug, calibration standard and certificate  
Pan drive with software and drivers, software protection USB dongle, PC ware on request

### System requirements

CPU	Intel® Core™ i5-2520M, CPU @ 2.50 GHz, Cores: 4
RAM	4 GB
Operating system (OS)	Microsoft® Windows® 10 32/64 bit (required for USB 3.0)

### Dimension

Net:	480 x 360 x 440 mm <sup>3</sup> / 11.0 kg
Gross:	800 x 600 x 700 mm <sup>3</sup> / 20.0 kg