

emco IAS Scarredness Tester

**Device for measuring the
topographical properties of the paper surface**

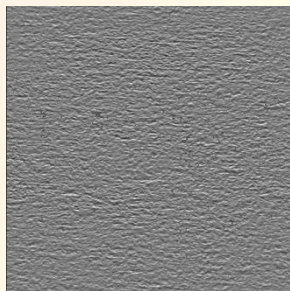


- ✓ Analysis of the correlation between ink absorption, printability and print uniformity on the one hand and scarredness on the other hand
- ✓ Analysis of the correlation between the scarredness of the uncoated base paper and uneven absorption of printing inks (Mottling) on the coated paper
- ✓ Analysis of the correlation between toner absorption or toner fixation and scarredness of photocopying papers
- ✓ Analysis of the influence of scarredness on processes such as coating, gluing, laminating and lacquering
- ✓ Quality control
- ✓ Optimization of surface structures of felts and wires
- ✓ Reference to the necessity of changing the machine clothing (wire, felt)
- ✓ Analysis of correlation of the roughness index (RI) with the consumption of color, adhesive, coating color, varnish etc.

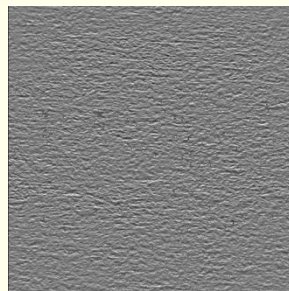
Scarredness of paper and carton surfaces

Areas appearing as peaks and depths in the paper surface are described as scars. Scars arise in the progress of sheet forming in the paper machine as the impression of the last felt in the press section. Pulp accumulations jutting out as peaks off the paper surface are flattened and compressed in machine direction by contact with rollers, drying cylinder, calendar, etc. and by pressure.

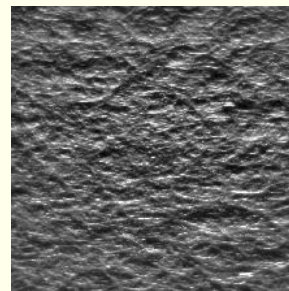
Scarredness as the **process dominating surface property** of printing, coating, gluing or laminating has barely been analyzed and received only little attention.



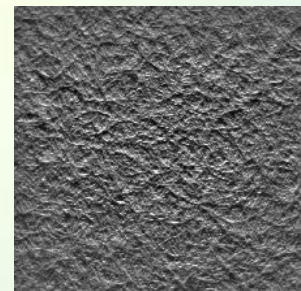
Coated base paper
original image



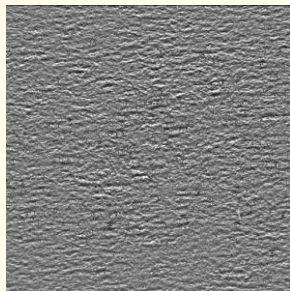
Coated base paper
filtered image



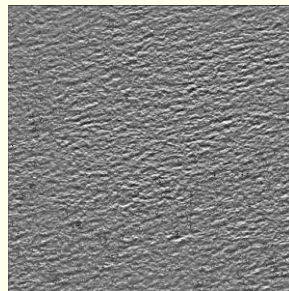
Base wall non-woven



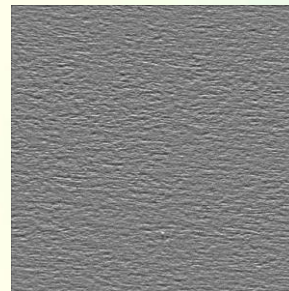
Wall non-woven coated



Corrugated paper 1



Corrugated paper 2



Photocopy paper



Coated board

Technical data

Measuring field: 28 mm x 28 mm
Illumination: oblique light

Scope of supply

Device with camera and illumination unit, power supply unit with mains plug, calibration standard and certificate
Pan drive with software and drivers, software protection USB dongle, PC ware on request

System requirements

CPU Intel® Core™ i5-2520M, CPU @ 2.50 GHz, Cores: 4
RAM 4 GB
Operating system (OS) Microsoft® Windows® 10 32/64 bit (required for USB 3.0)

Dimension

Net: 480 x 360 x 440 mm³ / 11.0 kg
Gross: 800 x 600 x 700 mm³ / 20.0 kg